

Figure 1. Analysis of Soft Tissue Sarcoma (STS) patients from the National Cancer Center Singapore (NCCS) showing (A) gender distribution, (B) racial distribution, (C) age distribution and (D) STS cases as a proportion of total cancer cases seen across different age groups. Majority of patients are Chinese. Incidence of STS is skewed towards younger age groups compared to All Cancers. STS accounts for a higher proportion of total cancer cases in younger age groups.

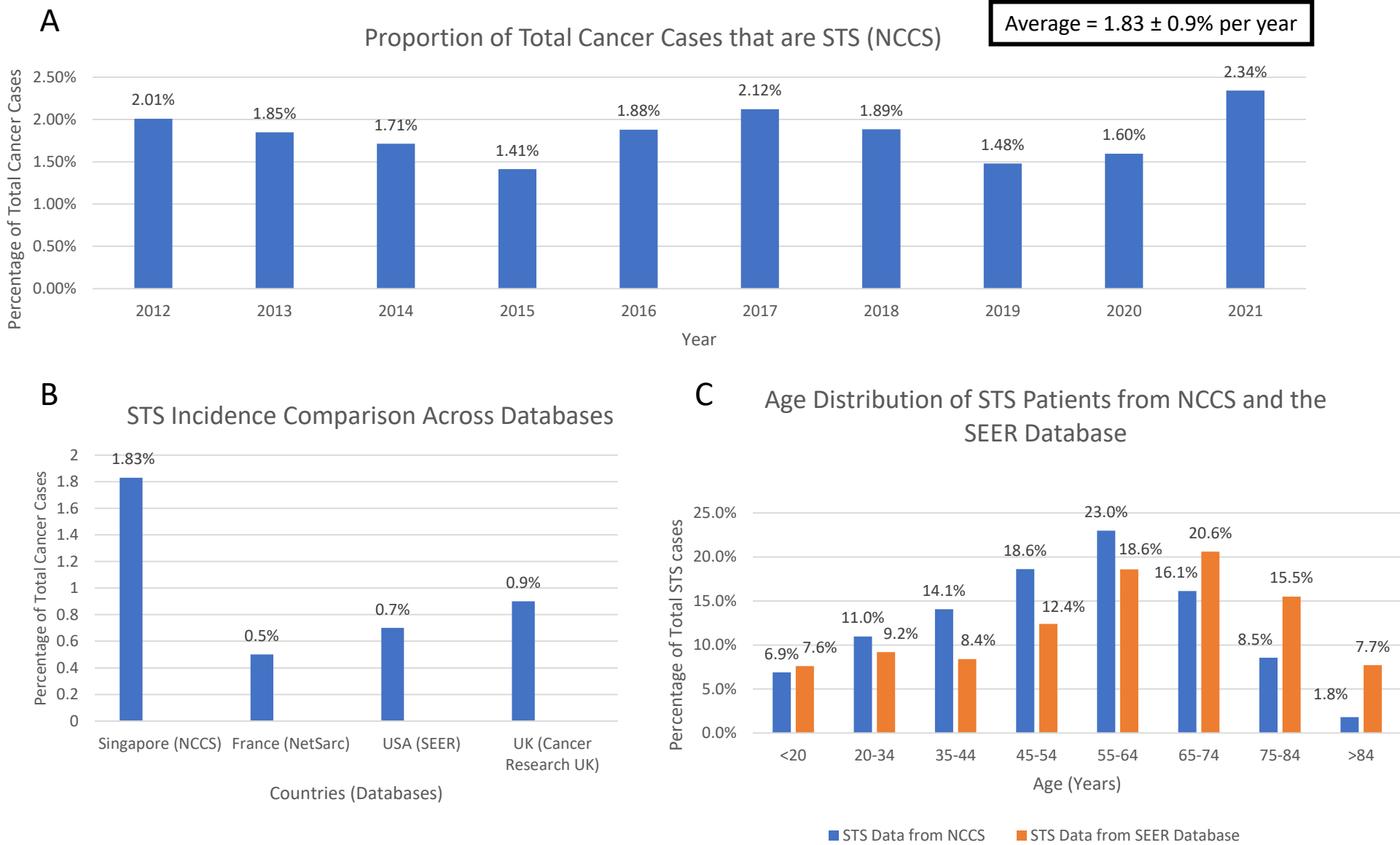


Figure 2 . Soft Tissue Sarcoma (STS) data from the National Cancer Center Singapore (NCCS) in comparison with other national databases. (A) STS cases as a proportion of total cancer cases seen at the National Cancer Centre Singapore, over a ten-year period from 2012 to 2021. The average was 1.83 ± 0.9 % per year. (B) Comparison of NCCS STS incidence with other national databases. NCCS STS incidence is higher than other countries. (C) Comparison of age distribution of STS patients at NCCS with the SEER database of STS patients in the USA. There is a skewing of incidence towards the younger age groups in NCCS patients in comparison to the SEER database.

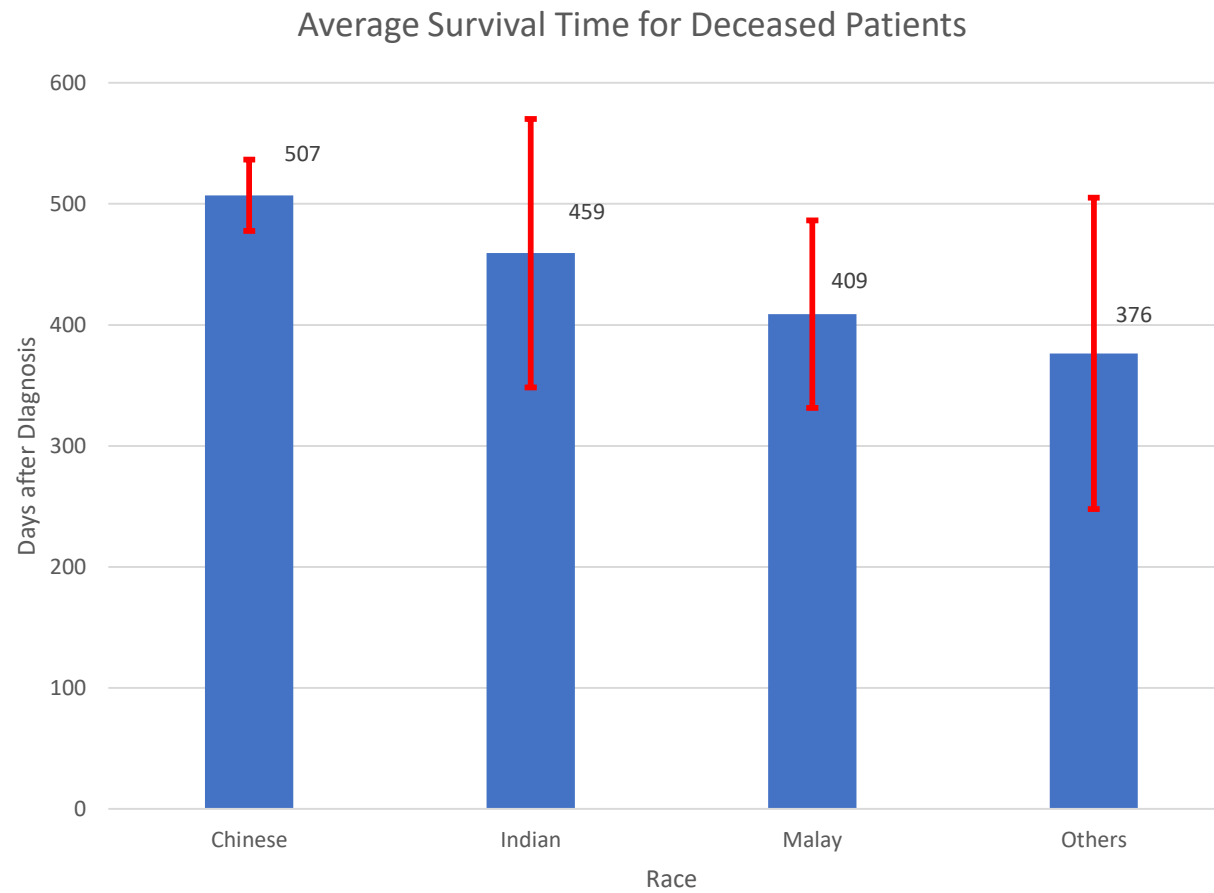


Figure 3. Average survival time for deceased STS patients from NCCS sorted by race. Error bars are calculated using the standard error of the mean. Chinese have better survival times compared to Malays and trended towards better survival times than Indian and Others.